



# PRODUCT CATALOGUE 2022



Ease of operation and clear indication  
Wireless communication  
Versatility of use



www.radwag.com

# C315 Terminal

MASS MEASUREMENTS IN INDUSTRY

# PUE C315

## Fast and Precise Weighing for Numerous Industrial Applications



### **Weighing Data Record**

An in-built memory allows record of data of the on going weighing - up to 5 000 records. Additional Alibi Memory guarantees safety by cause of automatically saved measurement log. All log-stored data can be analysed (up to 100 000 records).

### **Wireless Communication**

Use of the wireless communication Wi-Fi® enables export of recorded measurements and data stored by Alibi Memory, it also facilitates transfer of current mass indications either to a mobile application or a respective RADWAG software.

### **Generating Reports**

The C315 indicator offers a function using which you can generate and print a report on performed adjustments and weighings, all it in accordance with GLP rules. the reports can be completed with the real time of carried out measurements, this is thanks to an in-built RTC.

### **Reliability and Safety**

Platform of solid mechanical design, made of powder-coated steel AISI 304, ensures durability and endurance in everyday use in slightly challenging industrial conditions.

### **Ease of Operation and Clear Indication Presentation**

Due to a backlit LCD the measurement result is clearly visible. Easy operation enables fast and reliable measurements to be carried out even by an inexperienced operator.

### **Numerous Configurations**

Weighing pan of numerous dimensions and vast capacity range favour selection of an optimal solution suiting specific requirements and needs of various customers.

Robust Weighing Indicator  
for the Toughest Industrial Applications



www.radwag.com

# PUE H315 Terminal

MASS MEASUREMENTS IN INDUSTRY

# PUE H315

## Robust Weighing Indicator for the Toughest Industrial Applications



The new PUE H315 indicator by RADWAG is extremely robust thanks to its stainless steel housing with IP 66/67/69. The indicator's high degree of ingress protection translates into failure-free operation in harsh industrial conditions. PUE H315 is also versatile, so it can be used as a component of a wide range of industry scales - from small table-top scales, through platform, ramp, track and pallet scales, to livestock scales.

### Operation Ergonomics

The compact design of PUE H315 improves the user experience. The indicator is a multifunctional device which can be connected to the scale via cable. You can operate it when placed on a table, or mounted on a post or a wall. A special bracket enables adjusting the tilt angle of the device, which increases the ergonomics.

### Vast Range of Working Modes and Functions

The indicator has been equipped with numerous working modes: Parts Counting, +/- Control, Percent Weighing, Totalizing, Animal Weighing and Peak Hold. Additionally, it enables defining of simple printouts in accordance with GLP procedures, and features weighing and Alibi Memory with export option, real-time clock and extensive tare functions.

### Communication Interfaces and Exchange of Information with External Devices

By standard, the PUE H315 indicator features RS 232 and USB communication interfaces. The possibility of equipping it with additional interfaces facilitates its customization to specific requirements like for example communication with stack lights and external buttons controlling scale functions (zeroing, taring and printout), or integration with unsophisticated automation systems. The indicator allows for communication with external devices such as a receipt printer, additional display, computer or USB flash drive.

5" colour graphic display

Menu customization

100 thousand measurements kept in terminal's memory



www.radwag.com

# PUE C32 Terminal

ADVANCED LEVEL FOR INDUSTRIAL SCALES

# PUE C32

## Warranty of Continuous Data Storing Optional Battery Power Supply



### Work Ergonomics

The terminal has been equipped with 5" colour display ensuring perfect readability, and 16-key membrane keypad featuring programmable function keys. The terminal offers customized menu, with this all your personal needs can be met which makes operation even more intuitive and simple. Two proximity sensors allow touch-free operation, you can assign them with any terminal function. The housing is made of durable ABS plastic.

### Battery as an Optional Power Source

Use of the optional battery enables the PUE C32 terminal to operate even when there is either no or unstable power supply.

### Communication Interfaces

Communication interfaces of PUE C32 terminal facilitate cooperation with numerous peripheral devices, e.g. printer or computer, and enable exchange of data by means of USB flash drives. Equipped with Wi-Fi®\* module, the PUE C32 can also communicate with wireless networks.

### Data Management

Information system of PUE C32 terminals has been based on Alibi Memory and the following databases: users, products, weighings, packagings, formulations, customers. Data exchange within the system is bidirectional and it is carried out via USB interface. The terminals enable import and export of databases which is done using USB flash drives.

### Alibi Memory

Alibi Memory provides data safety and allows saving up to 100 thousand weighing records. This guarantees continuous storing of data over a long period of time.

5.7" colour touchscreen  
Vast range of applications  
Intended for network operation



# PUE 7.1 Terminal

ADVANCED LEVEL FOR INDUSTRIAL SCALES

# PUE 7.1

## Numerous Working Modes High Efficiency



### **Ergonomics and Comfort of Operation**

The terminal has been equipped with 5.7" colour TFT touchscreen, ensuring perfect readability, and membrane keypad. the device features two proximity sensors placed at the front of the housing, which can be freely configured using menu. the proximity sensors enable touch free operation making your work even more comfortable, and help to keep the terminal clean.

### **Ingress Protection Rating**

The standard version of the terminal, PUE 7.1, features plastic housing for which the degree of protection is IP43. the panel version, i.e. PUE 7.1P terminal, has been equipped with housing made of stainless steel, rated with IP66/67. the stainless steel model can be installed in a control panel or a switchboard.

### **Vast Range of Applications**

Terminal software offers numerous working modes designed to perform various weighing processes such as parts counting, dosing, formulations, transactions or determination of density of solids. the terminal can be an integral part of many scales and weighing systems operating in various branches of industry.

### **Communication Interfaces**

PUE 7.1 and PUE 7.1P terminals have been equipped with RS232, USB-A and Ethernet interfaces and with 4 digital inputs and outputs. This facilitates both cooperation of the terminal with peripheral devices and data exchange using USB drives. the PUE 7.1 comprises wireless communication module allowing the terminal to connect with wireless networks.

### **High Efficiency**

The terminal features dual-core processor with 1 GHz processing power, 256 MB RAM and Windows CE 7.0. With this high efficiency operation is guaranteed.

Compliance with ATEX directive  
Operation in hazardous area  
Stainless steel housing of high protection class



# HX5 EX Terminal

INDICATOR FOR HAZARDOUS AREAS

# HX5 EX

**HX5.EX is an indicator intended for industry designed to be used in hazardous areas. HX5.EX is compliant with ATEX directive.**



## Intended Use

HX5.EX indicator is a device used to make multifunctional weighing instruments based on load cells. It is the latest RADWAG solution intended for hazardous areas and compliant with ATEX directive. Due to its mechanical design, the HX5.EX can be used in environment filled with explosive gases and dust. It can be operated in zones: 1/21 and 2/22.

## Mechanical Design

The housing is made of AISI 304 stainless steel of IP 66/68 protection class. The indicator is equipped with a membrane keypad and 5" colour graphic display covered with polycarbonate that protects it against shocks. Hermetic, intrinsically safe interfaces connectors are located on the back side of the housing. Stable mount bracket enables mounting the indicator either on any flat horizontal surface or on the wall where its inclination angle can be easily adjusted. HX5.EX indicator is powered by intrinsically safe power supply that can be operated in both hazardous and safe areas.

## Communication Interfaces

The indicator is equipped with the following communication interfaces enabling cooperation with devices located in hazardous area:

- RS 232 × 2 (barcode scanner, data transmission),
- RS 485 (data transmission),
- IN / OUT × 4 (external keys, dosing devices control, checkweighing thresholds signalling).

The interfaces range can be expanded using communication module, connected to a terminal via intrinsically safe interface RS485, placed outside hazardous area.

## Communication Module

### Standard design:

- Ethernet,
- RS232×2,
- USB,
- 4 IN/4 OUT - digital (external keys, dosing devices control, checkweighing thresholds signalling).

### Optional design:

- Profibus Dp (transmission of data with PLC controllers: mass, tare),
- 4-20mA/0-10V analog output (mass value indication),
- up to 12 digital IN/OUT (external keys, dosing devices control, checkweighing thresholds signalling).

## Multifunctional Software

Indicator software allows carrying out processes such as weighing, parts counting, dosing and percent weighing. Information system is based on numerous databases: operators, products, weighings, packaging, customers. Alibi Memory guarantees stored data safety. The interfaces enable cooperation between the indicator and the accessories intended for operation in hazardous and safe areas. Accessories: barcode scanners, printers, external displays, control buttons, light signalling towers and other controlling/signalling devices. The indicator can cooperate with systems for automatic process control and superior IT systems.

Multifunctional software  
Clear menu and intuitive operation  
Handy diode bar graph



# PUE HX7 Terminal

ERGONOMICS IN INDUSTRY

# PUE HX7

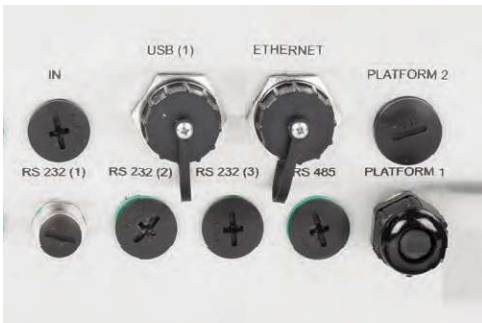
**Quality and precision in unfavourable working conditions  
Adaptation to the requirements of a production process**



The bar graph, consisting of 9 red and green diode fields, is located at the top of the operation panel, it visualises a current net weight value.



The housing is made of AISI 304 stainless steel of high protection class: IP66/68.



The back side of the housing features hermetic connectors of communication interfaces.



Clear menu and intuitive information arrangement on the display guarantee uncomplicated and comfortable operation.

## Wide Area of Use

The PUE HX7 terminal is an industry device used as an integral component of multifunctional single and multiple load-cell scales. The terminal is based on the latest solutions and an advanced computing platform. Its housing is made of AISI 304 stainless steel of high protection class: IP66/68.

## Communication with Weighing Platforms

Basic version of the terminal supports 1 analog weighing platform. With an additional weighing module installed, the terminal can support two weighing platforms.

## Diode Bar Graph

9-diode bar graph, located at the housing top regardless of the interface, signals current net weight of a product in relation to the scale range. The terminal features 3 working modes: linear, weighing thresholds signalling and checkweighing. The bar graph significantly increases the comfort of terminal operation during piecework in food industry where fast and unambiguous presentation of product mass deviation related to the declared min and max values is crucial.

## Intuitive Interface and Multifunctional Software

When creating the software, a great emphasis was put on its functionality and ergonomics. Intuitive interface plus large 7" screen stand for maximum comfort of operation. The terminal's software allows carrying out processes such as weighing, parts counting, dosing, labelling and percent weighing. The information system of the terminal is based on the following databases: users, products, weighings, packaging, formulations and customers. Use of Alibi Memory guarantees stored data safety.

## Battery as an Optional Power Source

Thanks to the optional battery, the PUE HX7 terminal can operate even when there is either no or unstable power supply. This improves the security of acquired data and improves comfort of operation.

## Hermetic Connectors of Communication Interfaces

PUE HX7 terminal is equipped with hermetic connectors of the following interfaces: RS 232, USB, Ethernet, digital inputs/outputs, etc.

10.1" touchscreen  
Screen customization  
Remote control of terminal's settings



# PUE HY10 Terminal

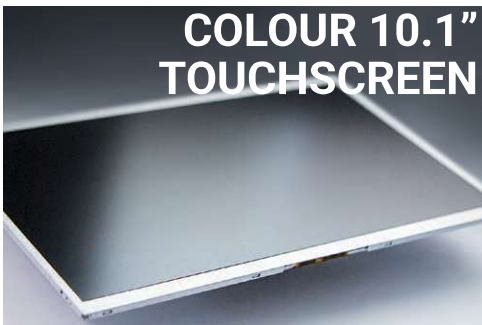
ADVANCED WEIGHING SOLUTION FOR INDUSTRY

# PUE HY10

Quality and precision in challenging working conditions  
Customization to production process requirements



Hermetic stainless steel housing guaranteeing faultless operation in humid and dusty environment.



10.1" colour capacitive display of 1024x600 pixels resolution providing good ergonomics



Complex customization option, i.e. self-designed screen layout and menu.



HY 10 terminal features pictograms database providing you with icons that can be assigned to weighed products.

## Screen Customization

PUE HY10 screen is customizable to make it suit your individual preferences and specific requirements of any production process.

## Production Processes Editor

'Traceability Processes' function enables you to precisely program weighing process course. As an operator you are guided step by step therefore there is no need for you to worry that any operation might be omitted.

## Remote Setup

The remote setup is a cutting-edge solution. Now you can set PUE HY10 terminal from anywhere in the world. All you need to connect to the terminal is Internet and 'Parameters Editor' application.

## Applications in Line with Industry Requirements

PUE HY10 software makes the terminal possible to be used for vast range of industrial applications, e.g. labelling, dosing, parts counting, formulations, prepackaged goods control (PGC), statistic quality control.

## Reliability and Hygiene in Challenging Conditions

Stainless steel mechanical design and IP68/69 in-use facilitate terminal operation under challenging industrial conditions. These two characteristics make the terminal meet high hygiene standards for food and pharmaceutical industries.

## Managing Multi-Platform Systems

PUE HY10 terminal can support operation of 6 weighing platforms (including 2 load cell ones). It offers connecting laboratory balances and weighing modules.

## Databases and Ease of Archiving

Large PUE HY10 terminal database facilitates archiving the results of your work and reports. The data can be exchanged between terminals. Data import and export options are at your disposal.

Terminal and computer in one  
 Large modern touchscreen  
 Wide range of industrial applications



www.radwag.com

# PUE 5 Terminal

VERSATILE INDUSTRIAL APPLICATIONS

# PUE 5

## Reliability in Industrial Conditions Complete Support of Weighing Processes



### Comfort of Operation

PUE 5 terminal features a large, modern, high-resolution screen – 15.6 inches or 19 inches (depending on the chosen model). Easy to read menu and clear-cut information arrangement ensure comfort of operation.

### Industrial Computer Functionality

PUE 5 combines functionality of an advanced weighing terminal and typical features of a Windows based industrial computer. With Quad Core 2GHz processor, 4GB RAM and fast SSD the terminal processes your data quickly even when complex applications are operated.

### Reliability and Resistance to Adverse Working Conditions

PUE 5 terminal is equipped with a hermetic stainless steel housing of protection class IP 65. Such solution allows the user to operate the terminal in harsh industrial conditions: high humidity and dustiness. It also guarantees both resistance to mechanical damage and good readability. Absolute precision of touch detection enables the user to wear gloves while operating the terminal.

### Industrial Applications of PUE 5.

PUE 5 software allows using the terminal for labelling, parts counting, formulations, weighing records and transactions. All these applications work with E2R software thus providing a complete support of the weighing processes.

### Easy Process of Creating Your Own Applications

PUE 5 operates on the basis of Windows 7 what makes working with various applications prepared by the customer a lot easier. The device is equipped with a set of programming components enabling cooperation of created applications with weighing modules.

### Multiplatform Systems Management

PUE 5 terminal can support up to 4-load-cell weighing platforms. To your benefit it features option of connecting laboratory balances and weighing modules.

# Technical Specification



Product Code	Model	Protection class	Communication interface	display	Weighing platforms quantity
WX-008-0191	<b>PUE H315</b>	IP 66 / IP 67 / IP 69	1×RS232, 1×USB	LCD (backlit)	1



Product Code	Model	Protection class	Communication interface	display	Weighing platforms quantity
WX-008-0150	<b>PUE C315</b>	IP 43	1×RS232	LCD (backlit)	1



Product Code	Model	Protection class	Communication interface	display	Weighing platforms quantity
WX-008-0141	<b>PUE C32</b>	IP 43	2×RS232, USB-A, USB-B, Ethernet, 4 in / 4 OUT (digital), Wi-Fi	5" graphic colour	1



Product Code	Model	Protection class	Communication interface	display	Weighing platforms quantity
WX-008-0025	<b>PUE 7.1</b>	IP 43	2×RS232, 2×USB-A, Ethernet, 4 in / 4 OUT (digital), Wi-Fi	5,7" resistive colour touchscreen	2



Product Code	Model	Protection class	Communication interface	display	Weighing platforms quantity
WX-008-0026	<b>PUE 7.1P</b>	IP 43	2×RS232, 2×USB-A, Ethernet, 4 in / 4 OUT (digital)	5,7" resistive colour touchscreen	2



Product Code	Model	Protection class	Communication interface	display	Weighing platforms quantity
WX-008-0145	<b>PUE HX5.EX-1</b>	IP 66 / IP 68	2×RS232, RS485	5" graphic colour	1
WX-008-0147	<b>PUE HX5.EX-2</b>	IP 66 / IP 68	2×RS232, RS485, 4 in / 4 OUT (digital)	5" graphic colour	1
WX-008-0148	<b>PUE HX5.EX-3</b>	IP 66 / IP 68	2×RS232, RS485, 4 IN	5" graphic colour	1
WX-008-0149	<b>PUE HX5.EX-4</b>	IP 66 / IP 68	2×RS232, RS485, 4 OUT	5" graphic colour	1



Product Code	Model	Protection class	Communication interface	display	Weighing platforms quantity
WX-008-0158	<b>PUE HX7</b>	IP 66 / IP 68	RS232, USB, Ethernet, 4 in / 4 OUT (digital)	7" graphic colour	2



Product Code	Model	Protection class	Communication interface	display	Weighing platforms quantity
WX-008-0027	<b>PUE HY10</b>	IP 68 (1h max)/69	2xRS232, 2xUSB, Ethernet, 4 in / 4 OUT (digital)	10,1" graphic colour touchscreen	4



Product Code	Model	Protection class	Communication interface	display	Weighing platforms quantity
WX-008-0036	<b>PUE 5.15C Terminal</b>	IP 68	2xRS232, RS485, 4xUSB, 2xEthernet, Profibus	15,6" graphic colour touchscreen	4
WX-008-0035	<b>PUE 5.15IR Terminal</b>	IP 68	2xRS232, RS485, 4xUSB, 2xEthernet, Profibus	15,6" graphic colour touchscreen	4
WX-008-0033	<b>PUE 5.15R Terminal</b>	IP 68	2xRS232, RS485, 4xUSB, 2xEthernet, Profibus	15,6" graphic colour touchscreen	4



Product Code	Model	Protection class	Communication interface	display	Weighing platforms quantity
WX-008-0038	<b>PUE 5.19C Terminal</b>	IP 68	2xRS232, RS485, 4xUSB, 2xEthernet, Profibus	19" graphic colour touchscreen	4
WX-008-0037	<b>PUE 5.19IR Terminal</b>	IP 68	2xRS232, RS485, 4xUSB, 2xEthernet, Profibus	19" graphic colour touchscreen	4
WX-008-0034	<b>PUE 5.19R Terminal</b>	IP 68	2xRS232, RS485, 4xUSB, 2xEthernet, Profibus	19" graphic colour touchscreen	4

Read more:



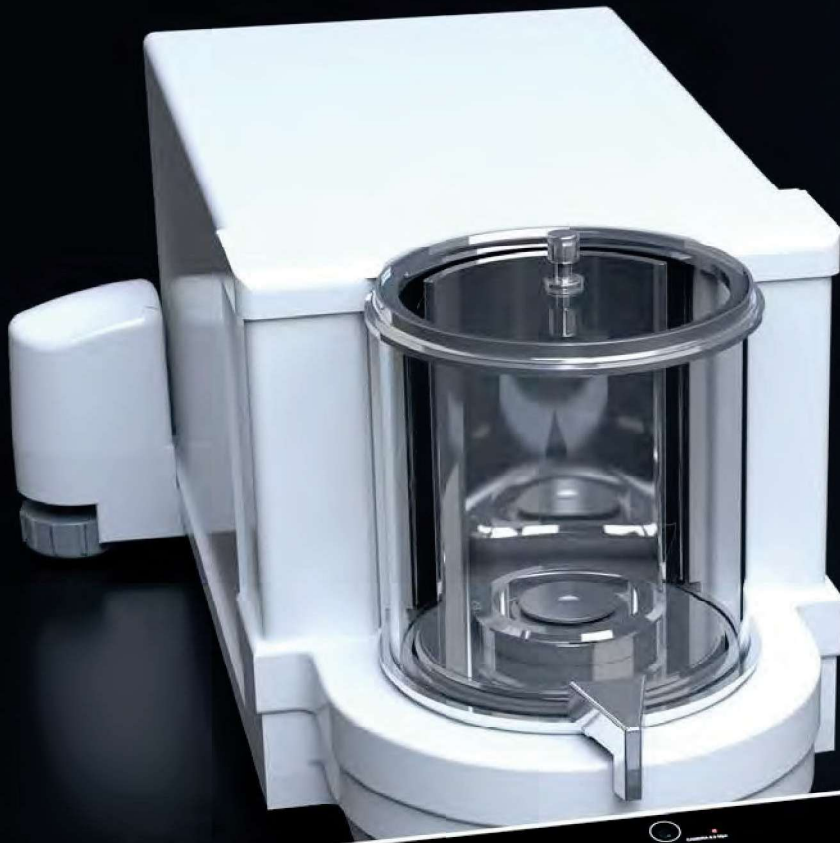


# PRODUCT CATALOGUE

---

ADVANCED WEIGHING TECHNOLOGIES





[www.radwag.com](http://www.radwag.com)